

f i n d i n g
F O R M

KLAUDIA KAS



















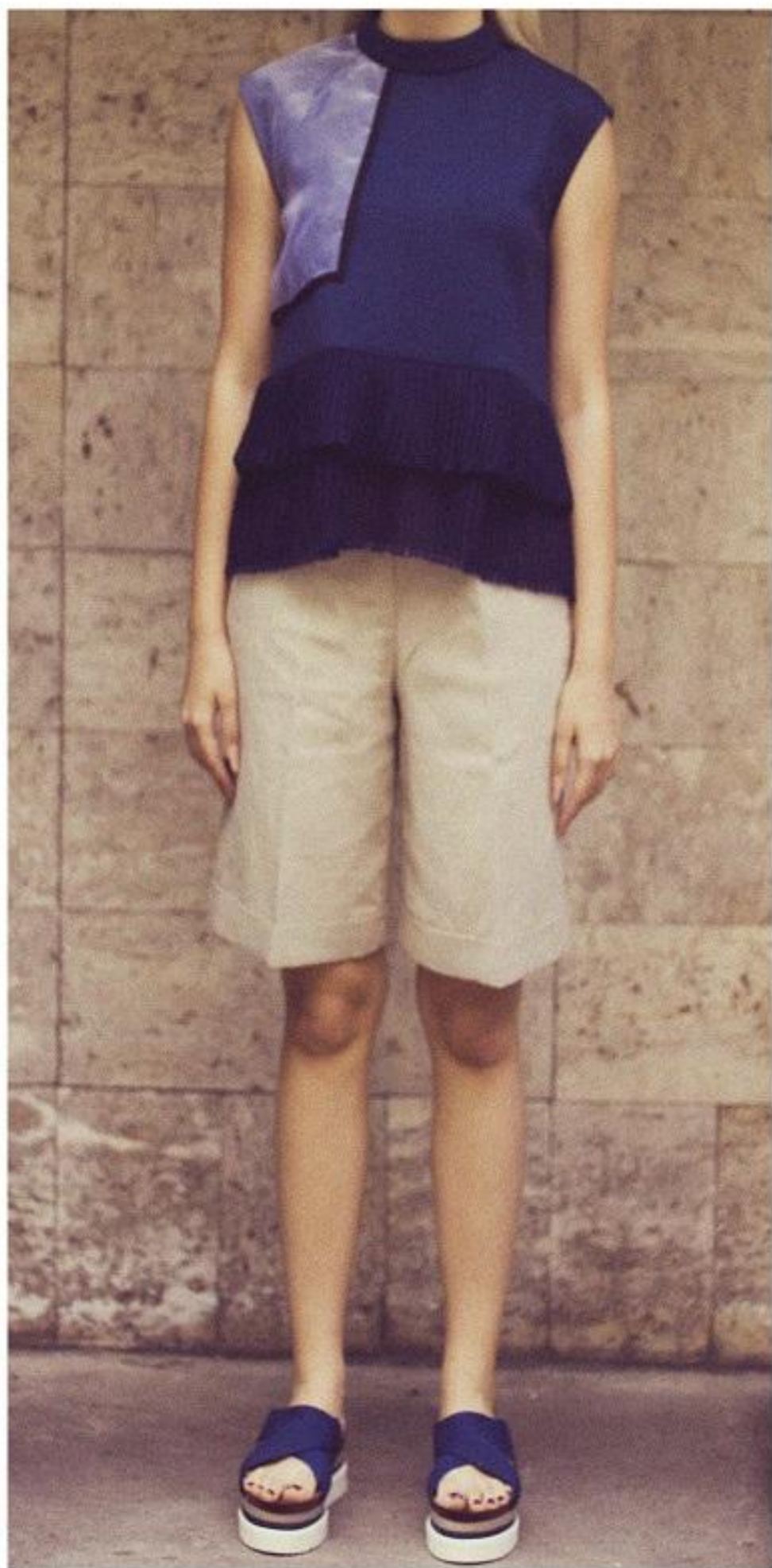















A person is shown from the waist down, wearing a brown suit consisting of a long, double-breasted jacket with two dark buttons and matching wide-leg trousers. They are also wearing black high-heeled sandals with white soles. The background is a wall made of large, light-colored stone blocks. The overall aesthetic is minimalist and professional.

kloudia.kasinska@gmail.com
+48 518 815 969